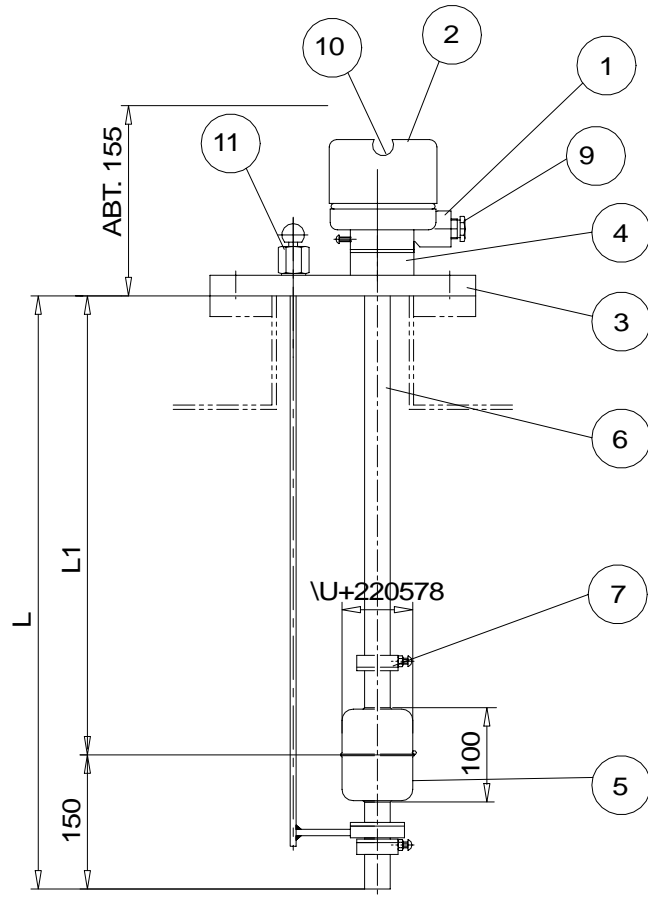


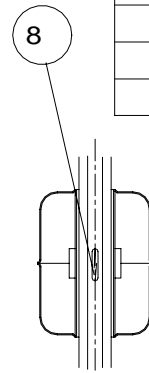
SALES DRAWING ONLY  
NOT TO BE USED FOR MANUFACTURE



**SPECIFICATION**

1. MAX. PRESSURE : 10bar
2. MAX. TEMPERATURE : 120°C
3. MOUNTING : TOP FLANGE
4. SWITCH : REED SWITCH TYPE
5. VOLTAGE : 250V, 0.5A
6. ENCLOSURE : IP56
7. APPLICATION : WATER & OIL

11	TEST LEVER	SUS304	1	HIGH
10	NAME PLATE	SUS304	1	
9	CABLE GLAND	BC	1	
8	REED SWITCH		1	
7	STOPPER	SUS304	2	
6	SENSOR PIPE	SUS304	1	ø21.7
5	FLOAT	SUS304	1	
4	SOCKET	SUS304	1	
3	FLANGE	SUS304	1	DIN100
2	COVER	ALC	1	
1	BODY	ALC	1	



ISSUE	DATE	DCR	DRAWN	CHECKED
A	18-04-07		JEK	

**PSm** Instrumentation Ltd

Haywards Heath, West Sussex RH16 1TW  
ph: 44 (0) 1444 410040 f: 44 (0) 1444 410121  
<http://www.psm-sensors.co.uk>

SCALE  
NTS

UNLESS OTHERWISE STATED DIMENSIONS ARE IN  
MILLIMETRES / INCHES

TITLE  
**Float Switch  
KD30 1A-W-T**

DRAWING NO  
**S-001289-SW-GA**

**A4**

SHT 1  
OF 1